

**INSTRUMENT
APPROACH
CHART - ICAO**

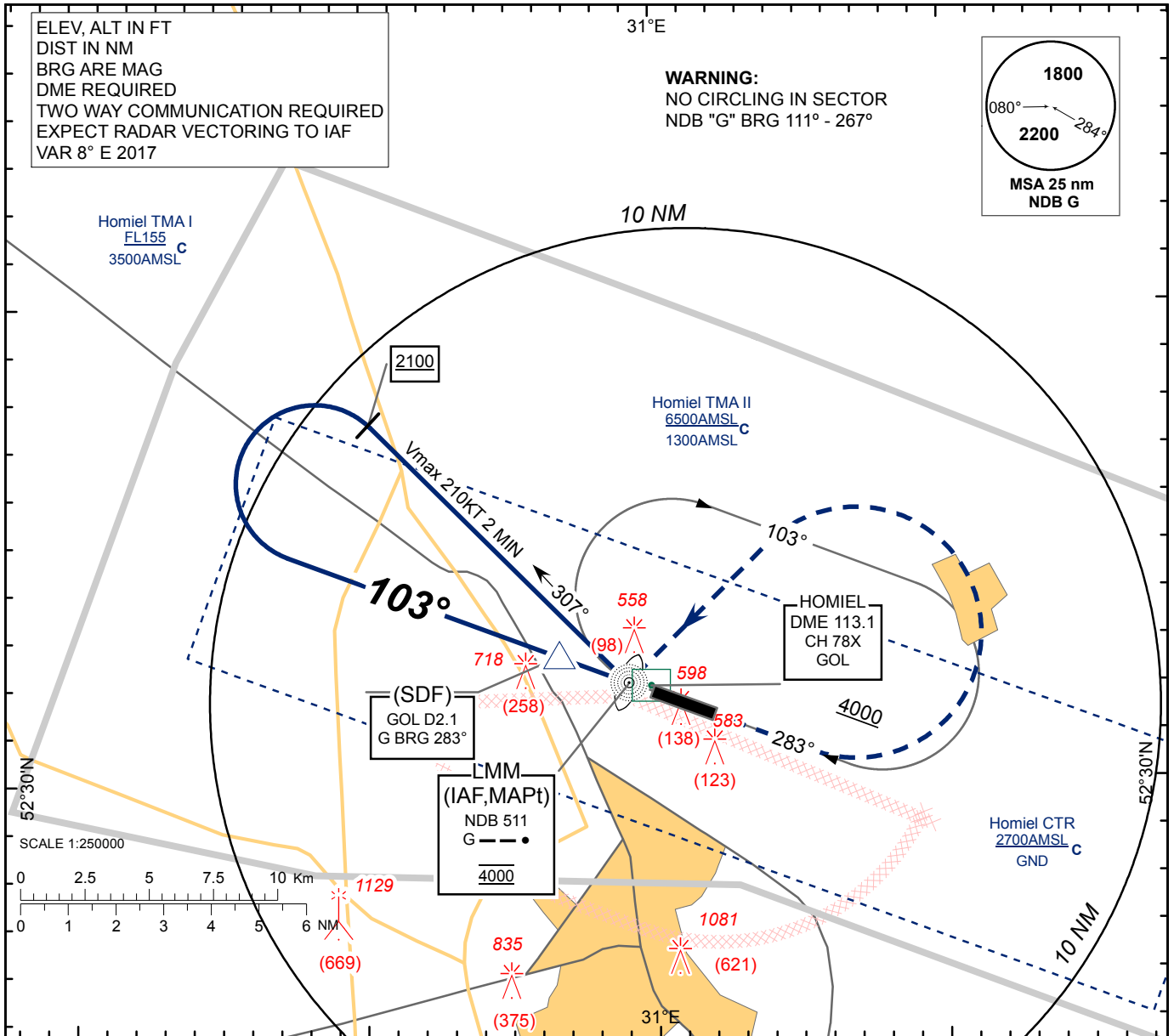
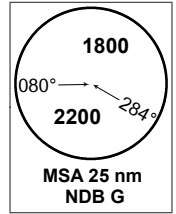
AERODROME ELEV 471
HEIGHTS RELATED TO
THR RWY 10 - ELEV THR 460

APP 126.100
TWR 118.100
MET 119.550 (EN)
124.475 (RUS)

**HOMIEL
NDB
RWY 10**

ELEV, ALT IN FT
DIST IN NM
BRG ARE MAG
DME REQUIRED
TWO WAY COMMUNICATION REQUIRED
EXPECT RADAR VECTERING TO IAF
VAR 8° E 2017

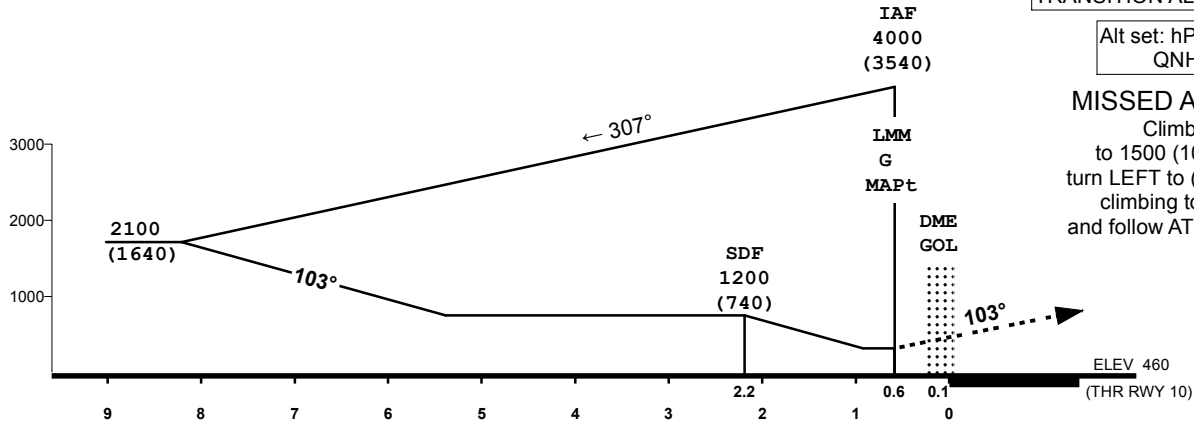
WARNING:
NO CIRCLING IN SECTOR
NDB "G" BRG 111° - 267°



TRANSITION ALTITUDE: 6000'

Alt set: hPa (mm on req)
QNH (QFE on req)

MISSED APPROACH
Climb on track 103°
to 1500 (1040) or above
turn LEFT to (IAF) LMM "G"
climbing to 2100 (1640)
and follow ATC instructions.



CHANGE: New chart.

Aircraft Category			A	B	C	D
Straight-in Approach OCA(H)	NDB G no FAF	with SDF	830 (370)			
		without SDF	1030 (570)			
Circle - to - land			860 (390)	860 (390)	1120 (650)	1120 (650)

HOMIEL
NDB
RWY 10

AERONAUTICAL DATA TABULATION

NDB approach to RWY10 from LMM	
Fix/point	Coordinates
(IAF, MAPt) G LMM	523204.5N 0305902.6E
(TP) G BRG 307° V 210KT 2 MIN	523729N 0305015E
(SDF) G BRG 283° D2.1 GOL	523237N 0305643E
DME GOL	523200.6N 0305949.9E
THR RWY 10	523152.08N 0305956.42E